



PRINCE SHRI VENKATESWARA ARTS AND SCIENCE COLLEGE

Gowrivakkam, Chennai-600073.

Affiliated to University of Madras

STUDENT FEEDBACK ON SYLLABUS – ANALYSIS REPORT

Academic Year 2018-19
Department B.Sc. Biochemistry
Number of Respondents 48

Rate the curriculum/ Syllabus on the following Points

S. No	Feedback on Syllabus	Excellent	Very good	Good	Average	Below Average
		5	4	3	2	1
1	Whether the syllabus is career oriented?	23	21	2	1	1
2	Whether the course was well structured to achieve course outcomes?	23	22	2	1	0
3	Rate the size of the syllabus in terms of student's load?	25	19	3	1	0
4	Whether the course objective is clear?	24	20	3	1	0
5	Are the books prescribed as a text book reference book in related to syllabus?	22	21	4	0	1
6	Whether the syllabus is relevant to real world problems?	22	23	2	1	0
7	Whether the syllabus is covered with industrial standards?	23	21	3	1	0
8	Is the syllabus in calculated necessary ethical values and concern for the	22	20	4	1	1



B. Kalpana
PRINCIPAL
PRINCE SHRI VENKATESHWARA
ARTS AND SCIENCE COLLEGE
GOWRIVAKKAM, CHENNAI 600 073.



PRINCE SHRI VENKATESWARA ARTS AND SCIENCE COLLEGE

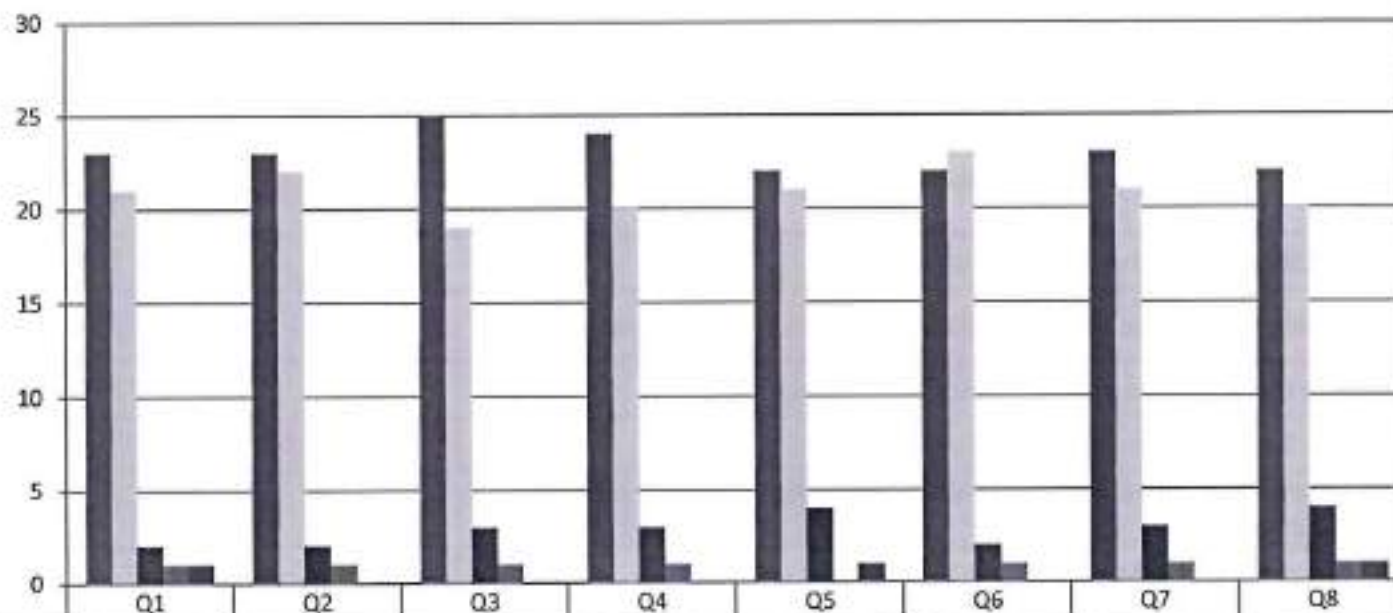
Gowrivakkam, Chennai-600073.

Affiliated to University of Madras

STUDENT FEEDBACK ON SYLLABUS - 2018-2019

B.Sc. BIOCHEMISTRY

(NUMBER OF RESPONDENTS - 48)



	Q1	Q2	Q3	Q4	Q5	Q6	Q7	Q8
■ Excellent (5)	23	23	25	24	22	22	23	22
■ Very Good (4)	21	22	19	20	21	23	21	20
■ Good (3)	2	2	3	3	4	2	3	4
■ Average (2)	1	1	1	1	0	1	1	1
■ Below Average (1)	1	0	0	0	1	0	0	1



B. Kalpana
PRINCIPAL
PRINCE SHRI VENKATESHWARA
ARTS AND SCIENCE COLLEGE
GOWRIVAKKAM, CHENNAI-600 073.



PRINCE SHRI VENKATESWARA ARTS AND SCIENCE COLLEGE

Gowrivakkam, Chennai-600073.

Affiliated to University of Madras

STUDENT FEEDBACK ON SYLLABUS – ANALYSIS REPORT

Academic Year 2018-19
Department B.Sc.-Microbiology
Number of Respondents 70

Rate the curriculum/ Syllabus on the following Points

S. No	Feedback on Syllabus	Excellent	Very good	Good	Average	Below Average
		5	4	3	2	1
1	Whether the syllabus is career oriented?	35	31	2	1	1
2	Whether the course was well structured to achieve course outcomes?	36	32	1	1	0
3	Rate the size of the syllabus in terms of student's load?	35	30	4	1	0
4	Whether the course objective is clear?	37	29	3	1	0
5	Are the books prescribed as a text book reference book in related to syllabus?	31	32	4	2	1
6	Whether the syllabus is relevant to real world problems?	34	34	1	1	0
7	Whether the syllabus is covered with industrial standards?	34	31	4	1	0
8	Is the syllabus in calculated necessary ethical values and concern for the	33	32	3	1	1



B. Kalpana
PRINCIPAL
PRINCE SHRI VENKATESHWARA
ARTS AND SCIENCE COLLEGE



PRINCE SHRI VENKATESWARA ARTS AND SCIENCE COLLEGE

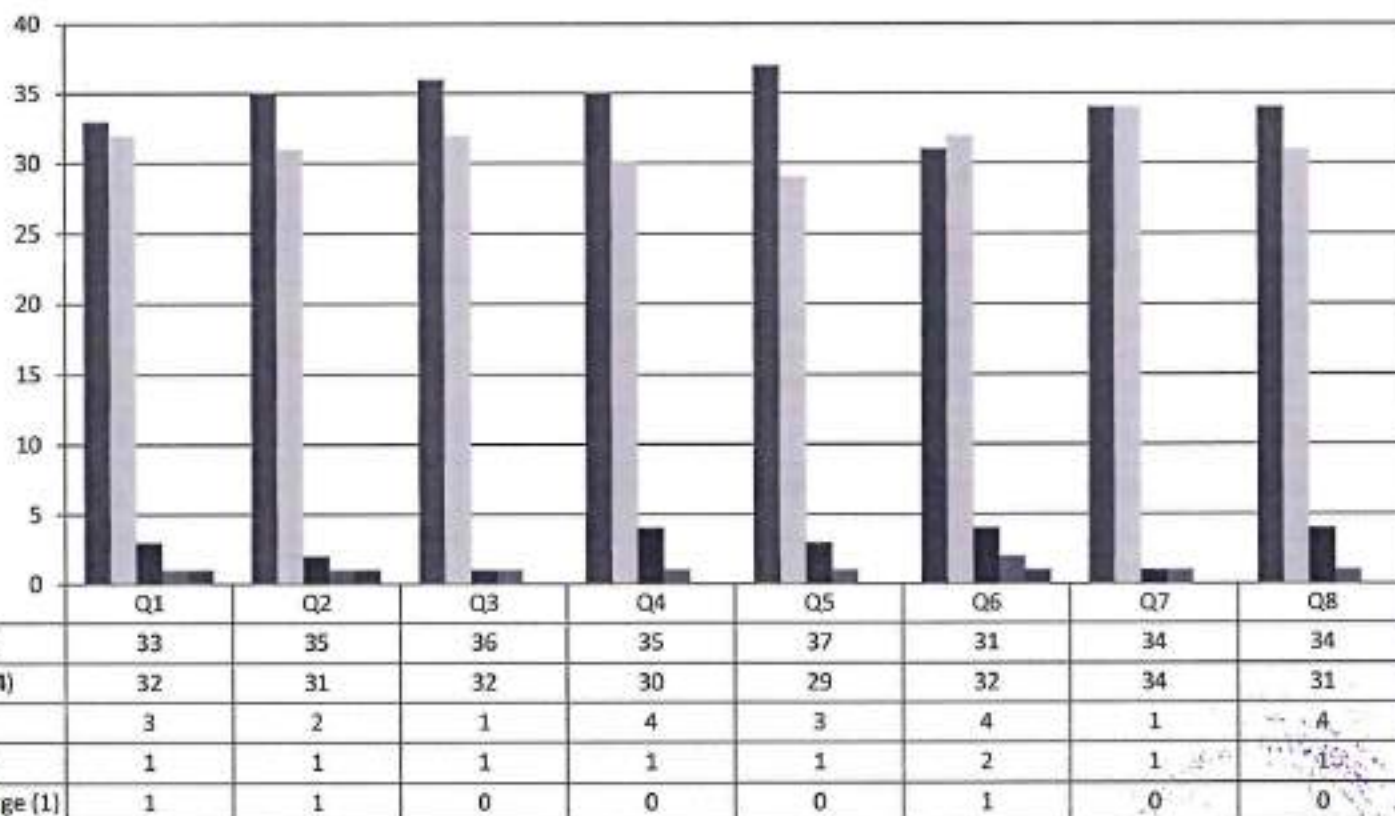
Gowrivalkdam, Chennai-600073.

Affiliated to University of Madras

STUDENT FEEDBACK ON SYLLABUS - 2018-2019

B.Sc. MICROBIOLOGY

(NUMBER OF RESPONDENTS - 70)



B. Kalpana
PRINCIPAL
PRINCE SHRI VENKATESHWARA
ARTS AND SCIENCE COLLEGE
GOWRIVALKAM, CHENNAI-600 073.



PRINCE SHRI VENKATESWARA ARTS AND SCIENCE COLLEGE

Gowrivakkam, Chennai-600073.

Affiliated to University of Madras

STUDENT FEEDBACK ON SYLLABUS – ANALYSIS REPORT

Academic Year

2018-19

Department

B.Sc. Electronics and Communication Science

Number of Respondents

32

Rate the curriculum/ Syllabus on the following Points

S. No	Feedback on Syllabus	Excellent	Very good	Good	Average	Below Average
		5	4	3	2	1
1	Whether the syllabus is career oriented?	14	16	1	1	0
2	Whether the course was well structured to achieve course outcomes?	16	11	2	2	1
3	Rate the size of the syllabus in terms of student's load?	18	13	0	1	0
4	Whether the course objective is clear?	19	10	2	1	0
5	Are the books prescribed as a text book reference book in related to syllabus?	18	11	1	1	1
6	Whether the syllabus is relevant to real world problems?	21	8	0	2	1
7	Whether the syllabus is covered with industrial standards?	20	11	0	1	0
8	Is the syllabus in calculated necessary ethical values and concern for the society?	22	10	0	0	0



B. Kalpana
PRINCIPAL
PRINCE SHRI VENKATESHWARA
ARTS AND SCIENCE COLLEGE
GOWRIVAKKAM, CHENNAI-600 073.



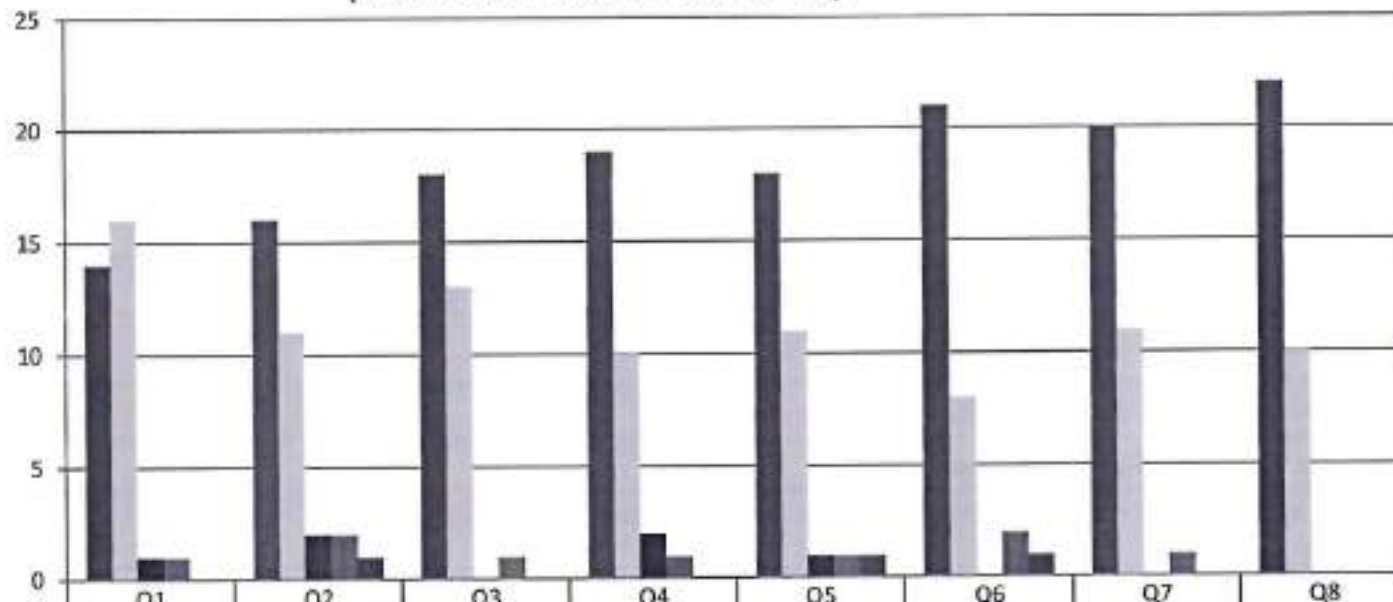
PRINCE SHRI VENKATESWARA ARTS AND SCIENCE COLLEGE

Gowrivakkam, Chennai-600073.

Affiliated to University of Madras

STUDENT FEEDBACK ON SYLLABUS - 2018-2019 B.Sc. ELECTRONICS AND COMMUNICATION SCIENCE

(NUMBER OF RESPONDENTS - 32)



	Q1	Q2	Q3	Q4	Q5	Q6	Q7	Q8
■ Excellent (5)	14	16	18	19	18	21	20	22
■ Very Good (4)	16	11	13	10	11	8	11	10
■ Good (3)	1	2	0	2	1	0	0	0
■ Average (2)	1	2	1	1	1	2	1	0
■ Below Average (1)	0	1	0	0	1	1	0	0



B. Kalpana
PRINCIPAL
PRINCE SHRI VENKATESHWARA
ARTS AND SCIENCE COLLEGE
GOWRIVAKKAM, CHENNAI-600 073.



PRINCE SHRI VENKATESWARA ARTS AND SCIENCE COLLEGE

Gowrivakkam, Chennai-600073.

Affiliated to University of Madras.

STUDENT FEEDBACK ON SYLLABUS – ANALYSIS REPORT

Academic Year **2018-19**
Department **B.Sc.-Computer Science**
Number of Respondents **216**

Rate the curriculum/ Syllabus on the following Points

S. No	Feedback on Syllabus	Excellent	Very good	Good	Average	Below Average
		5	4	3	2	1
1	Whether the syllabus is career oriented?	112	85	17	1	1
2	Whether the course was well structured to achieve course outcomes?	109	85	21	1	0
3	Rate the size of the syllabus in terms of student's load?	112	83	20	1	0
4	Whether the course objective is clear?	107	84	23	1	1
5	Are the books prescribed as a text book reference book in related to syllabus?	112	82	19	3	0
6	Whether the syllabus is relevant to real world problems?	110	86	19	1	0
7	Whether the syllabus is covered with industrial standards?	109	87	19	1	0
8	Is the syllabus in calculated necessary ethical values and concern for the society?	112	83	19	1	1



B. Kalpana
PRINCIPAL
PRINCE SHRI VENKATESHWARA
ARTS AND SCIENCE COLLEGE
GOWRIVAKKAM, CHENNAI-600 073.



PRINCE SHRI VENKATESWARA ARTS AND SCIENCE COLLEGE

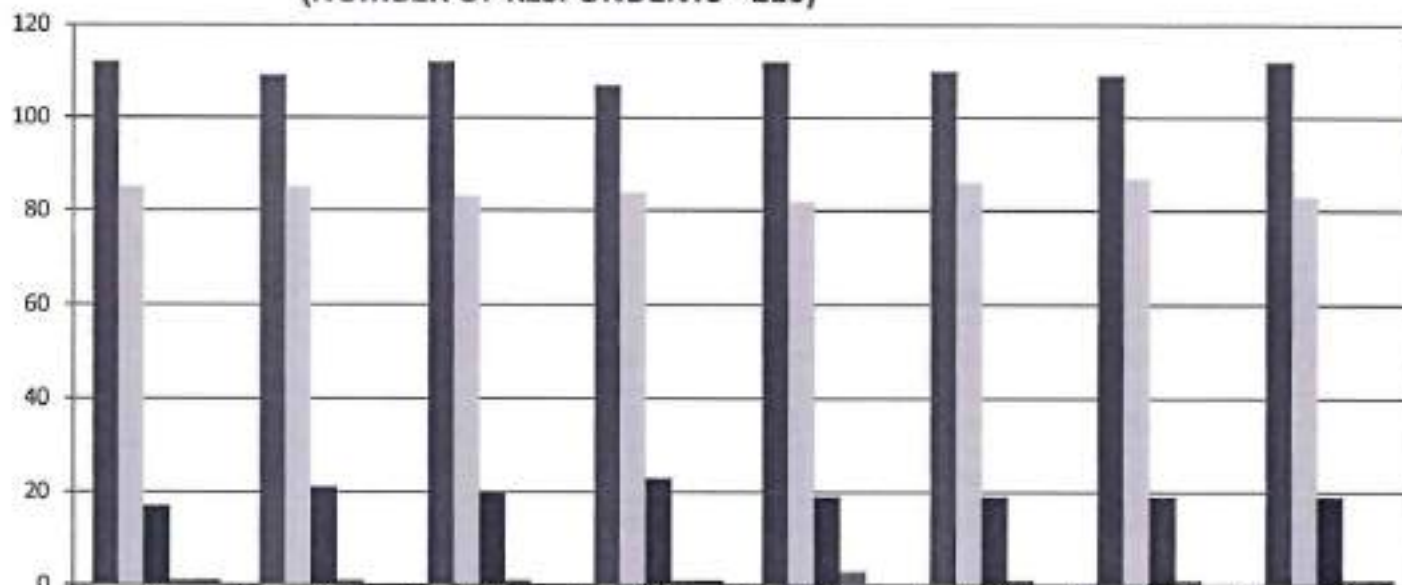
Gowrivakkam, Chennai-600073.

Affiliated to University of Madras

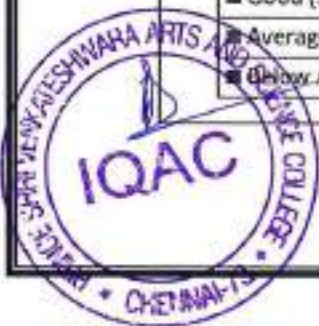
STUDENT FEEDBACK ON SYLLABUS - 2018-2019

B.Sc. COMPUTER SCIENCE

(NUMBER OF RESPONDENTS - 216)



	Q1	Q2	Q3	Q4	Q5	Q6	Q7	Q8
■ Excellent (5)	112	109	112	107	112	110	109	112
■ Very Good (4)	85	85	83	84	82	86	87	83
■ Good (3)	17	21	20	23	19	19	19	19
■ Average (2)	1	1	1	1	3	1	1	1
■ Below Average (1)	1	0	0	1	0	0	0	1



B. Kalpana
PRINCIPAL
PRINCE SHRI VENKATESHWARA
ARTS AND SCIENCE COLLEGE
GOWRIVAKKAM, CHENNAI-600 073.



PRINCE SHRI VENKATESWARA ARTS AND SCIENCE COLLEGE

Gowrivakkam, Chennai-600073.

Affiliated to University of Madras.

STUDENT FEEDBACK ON SYLLABUS – ANALYSIS REPORT

Academic Year

2018-19

Department

B. Com-General

Number of Respondents

313

Rate the curriculum/ Syllabus on the following Points

S. No	Feedback on Syllabus	Excellent	Very good	Good	Average	Below Average
		5	4	3	2	1
1	Whether the syllabus is career oriented?	153	152	8	0	0
2	Whether the course was well structured to achieve course outcomes?	150	152	11	0	0
3	Rate the size of the syllabus in terms of student's load?	155	147	10	1	0
4	Whether the course objective is clear?	157	149	7	0	0
5	Are the books prescribed as a text book reference book in related to syllabus?	156	150	6	1	0
6	Whether the syllabus is relevant to real world problems?	156	149	7	1	0
7	Whether the syllabus is covered with industrial standards?	154	151	7	0	1
8	Is the syllabus in calculated necessary ethical values and concern for the	152	151	10	0	0



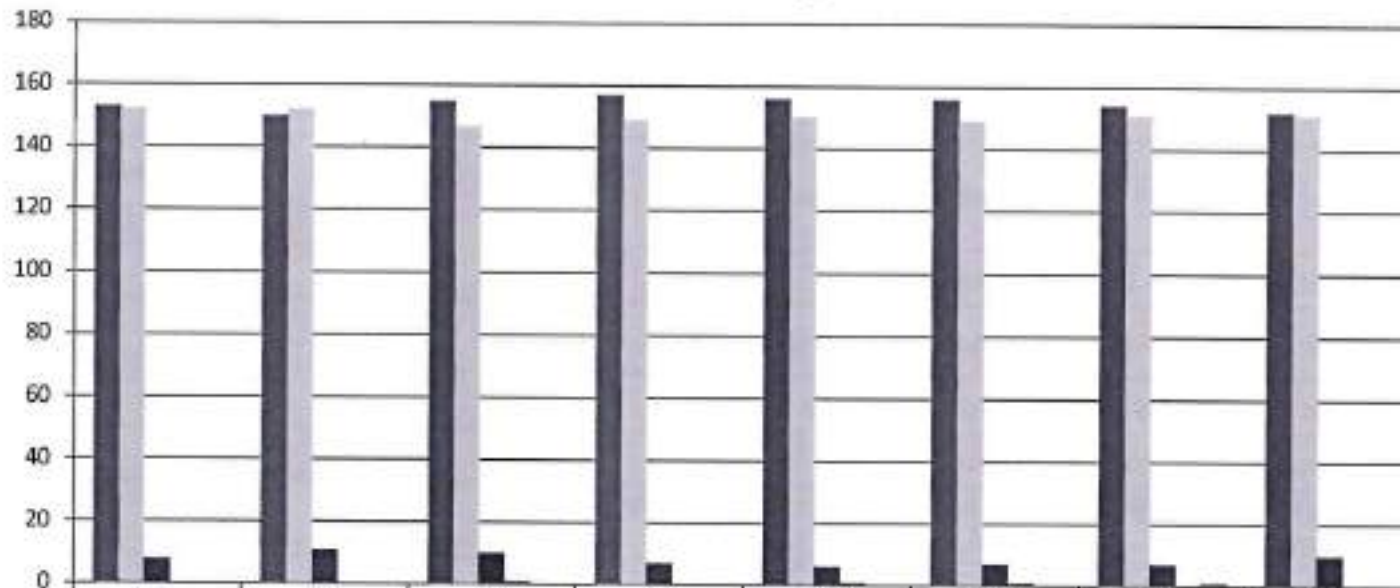
B. Kalpana
PRINCIPAL

PRINCE SHRI VENKATESHWARA
ARTS AND SCIENCE COLLEGE
GOWRIVAKKAM, CHENNAI-600 073



PRINCE SHRI VENKATESWARA ARTS AND SCIENCE COLLEGE
Gowrivaldkam, Chennai-600073.
Affiliated to University of Madras

STUDENT FEEDBACK ON SYLLABUS - 2018-2019
B.COM (GENERAL)
(NUMBER OF RESPONDENTS - 313)



	Q1	Q2	Q3	Q4	Q5	Q6	Q7	Q8
Excellent (5)	153	150	155	157	156	156	154	152
Very Good (4)	152	152	147	149	150	149	151	151
Good (3)	8	11	10	7	6	7	7	10
Average (2)	0	0	1	0	1	1	0	0
Below Average (1)	0	0	0	0	0	0	1	0



B. Kalyana
PRINCIPAL
PRINCE SHRI VENKATESHWARA
ARTS AND SCIENCE COLLEGE
GOWRIVAKKAM, CHENNAI-600 073.



PRINCE SHRI VENKATESWARA ARTS AND SCIENCE COLLEGE

Gowrivaikam, Chennai-600073.

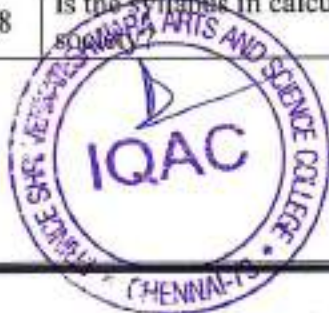
Affiliated to University of Madras

STUDENT FEEDBACK ON SYLLABUS – ANALYSIS REPORT

Academic Year 2018-19
Department BCA
Number of Respondents 220

Rate the curriculum/ Syllabus on the following Points

S. No	Feedback on Syllabus	Excellent	Very good	Good	Average	Below Average
		5	4	3	2	1
1	Whether the syllabus is career oriented?	110	102	7	1	0
2	Whether the course was well structured to achieve course outcomes?	109	101	8	1	1
3	Rate the size of the syllabus in terms of student's load?	108	103	8	1	0
4	Whether the course objective is clear?	107	104	9	0	0
5	Are the books prescribed as a text book reference book in related to syllabus?	106	104	10	0	0
6	Whether the syllabus is relevant to real world problems?	104	101	14	1	0
7	Whether the syllabus is covered with industrial standards?	109	98	10	2	1
8	Is the syllabus in calculated necessary ethical values and concern for the	107	102	10	1	0



B. Kalpana
PRINCIPAL
PRINCE SHRI VENKATESHWARA
ARTS AND SCIENCE COLLEGE
GOWRIVAKKAM, CHENNAI-600 073.



PRINCE SHRI VENKATESWARA ARTS AND SCIENCE COLLEGE

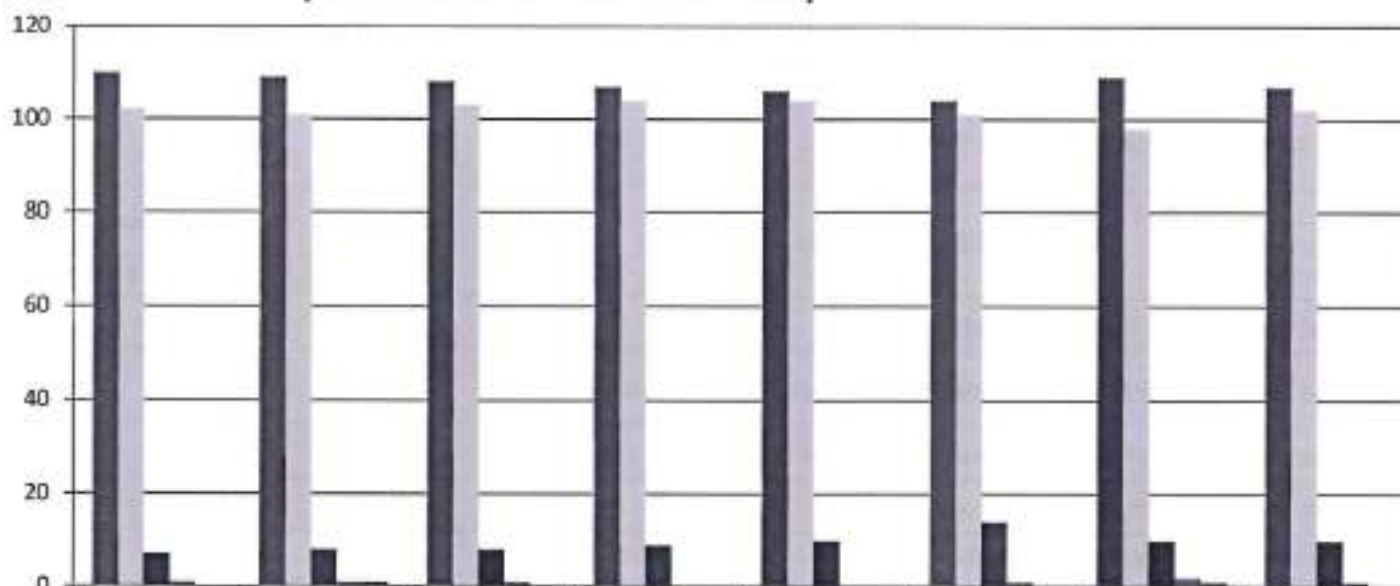
Gowrivakkam, Chennai-600073.

Affiliated to University of Madras

STUDENT FEEDBACK ON SYLLABUS - 2018-2019

BCA

(NUMBER OF RESPONDENTS - 220)



	Q1	Q2	Q3	Q4	Q5	Q6	Q7	Q8
■ Excellent (5)	110	109	108	107	106	104	109	107
■ Very Good (4)	102	101	103	104	104	101	98	102
■ Good (3)	7	8	8	9	10	14	10	10
■ Average (2)	1	1	1	0	0	1	2	1
■ Below Average (1)	0	1	0	0	0	0	1	0



B. Kalpana
PRINCIPAL
PRINCE SHRI VENKATESHWARA
ARTS AND SCIENCE COLLEGE
GOWRIVAKKAM, CHENNAI-600 073



PRINCE SHRI VENKATESWARA ARTS AND SCIENCE COLLEGE

Gowrivakkam, Chennai-600073.

Affiliated to University of Madras

STUDENT FEEDBACK ON SYLLABUS – ANALYSIS REPORT

Academic Year 2018-19
Department B.Sc.-Biotechnology
Number of Respondents 74

Rate the curriculum/ Syllabus on the following Points

S. No	Feedback on Syllabus	Excellent	Very good	Good	Average	Below Average
		5	4	3	2	1
1	Whether the syllabus is career oriented?	37	32	4	1	0
2	Whether the course was well structured to achieve course outcomes?	36	31	5	1	1
3	Rate the size of the syllabus in terms of student's load?	33	36	4	1	0
4	Whether the course objective is clear?	36	29	8	1	0
5	Are the books prescribed as a text book reference book in related to syllabus?	31	36	6	1	0
6	Whether the syllabus is relevant to real world problems?	31	37	5	0	1
7	Whether the syllabus is covered with industrial standards?	35	32	7	0	0
8	Is the syllabus in calculated necessary ethical values and concern for the society?	35	33	5	1	0



B. Kalpana
PRINCIPAL
PRINCE SHRI VENKATESHWARA
ARTS AND SCIENCE COLLEGE
GOWRIVAKKAM, CHENNAI-600 073



PRINCE SHRI VENKATESWARA ARTS AND SCIENCE COLLEGE

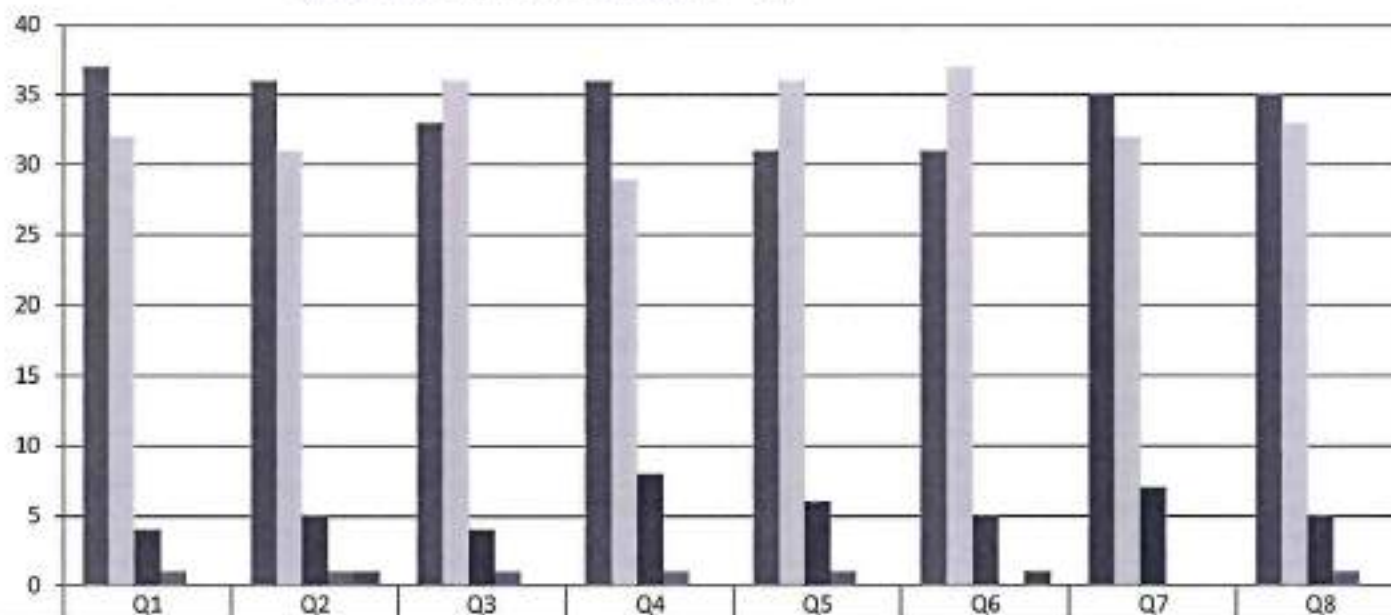
Gowrivakkam, Chennai-600073.

Affiliated to University of Madras

STUDENT FEEDBACK ON SYLLABUS - 2018-2019

B.Sc. BIOTECHNOLOGY

(NUMBER OF RESPONDENTS - 74)



	Q1	Q2	Q3	Q4	Q5	Q6	Q7	Q8
Excellent (5)	37	36	33	36	31	31	35	35
Very Good (4)	32	31	36	29	36	37	32	33
Good (3)	4	5	4	8	6	5	7	5
Average (2)	1	1	1	1	1	0	0	1
Below Average (1)	0	1	0	0	0	1	0	0



B. Kalpana
PRINCIPAL
PRINCE SHRI VENKATESHWARA
ARTS AND SCIENCE COLLEGE
GOWRIVAKKAM, CHENNAI-600 073.



PRINCE SHRI VENKATESWARA ARTS AND SCIENCE COLLEGE

Gowrivakkam, Chennai-600073.

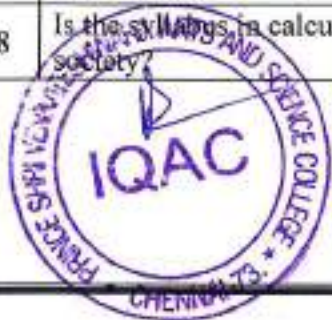
Affiliated to University of Madras

STUDENT FEEDBACK ON SYLLABUS – ANALYSIS REPORT

Academic Year **2018-19**
Department **B. Com - Accounting and Finance**
Number of Respondents **168**

Rate the curriculum/ Syllabus on the following Points

S. No	Feedback on Syllabus	Excellent	Very good	Good	Average	Below Average
		5	4	3	2	1
1	Whether the syllabus is career oriented?	104	56	7	1	0
2	Whether the course was well structured to achieve course outcomes?	103	55	8	1	1
3	Rate the size of the syllabus in terms of student's load?	100	60	7	1	0
4	Whether the course objective is clear?	103	53	11	1	0
5	Are the books prescribed as a text book reference book in related to syllabus?	98	60	9	1	0
6	Whether the syllabus is relevant to real world problems?	98	61	8	0	1
7	Whether the syllabus is covered with industrial standards?	102	56	10	0	0
8	Is the syllabus in calculated necessary ethical values and concern for the society?	104	15	7	0	0



B. Kalpana
PRINCIPAL
PRINCE SHRI VENKATESHWARA
ARTS AND SCIENCE COLLEGE
GOWRIVAKKAM, CHENNAI-600 073.



PRINCE SHRI VENKATESWARA ARTS AND SCIENCE COLLEGE

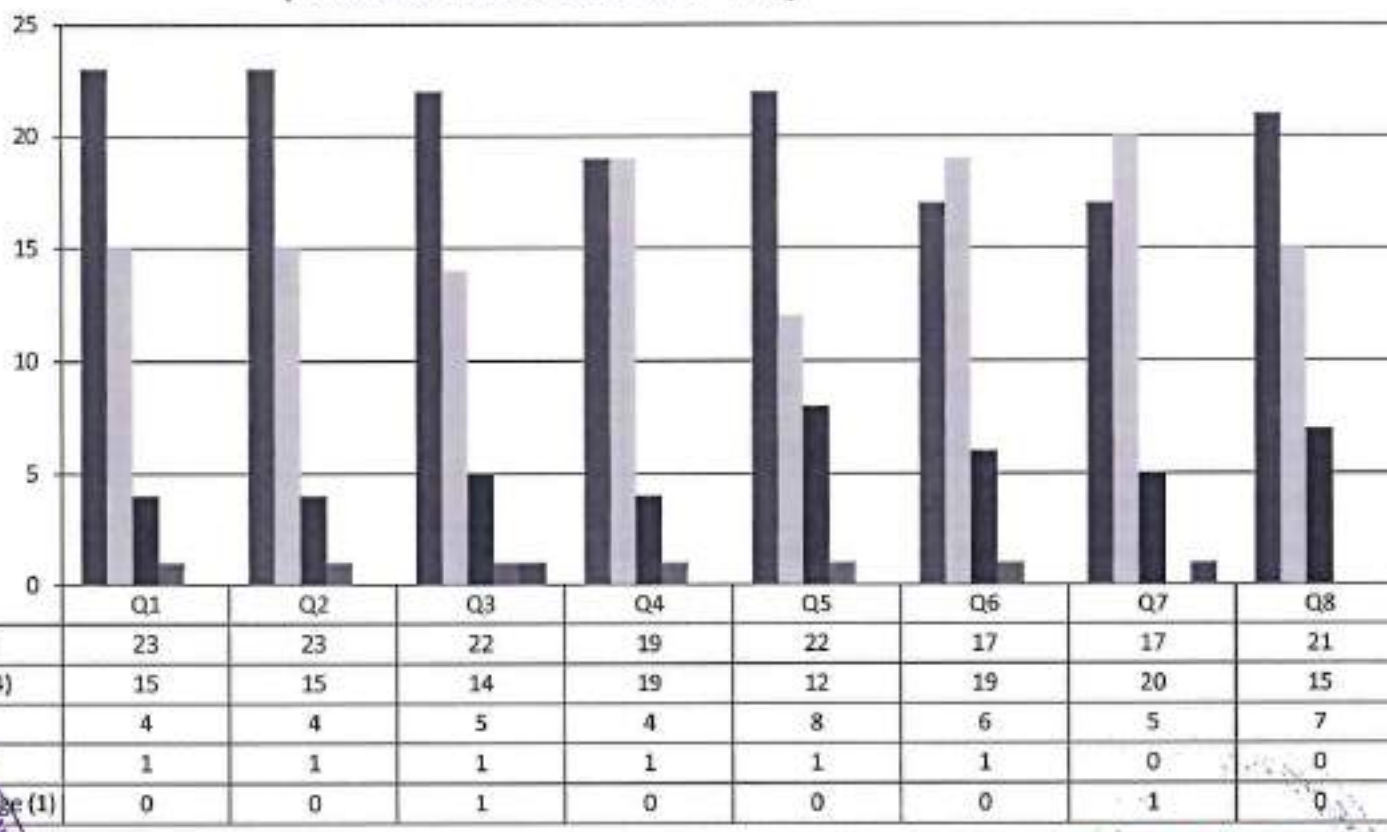
Gowrivakkam, Chennai-600073.

Affiliated to University of Madras

STUDENT FEEDBACK ON SYLLABUS -2018-2019

B.COM (ACCOUNTING & FINANCE)

(NUMBER OF RESPONDENTS - 168)



B. Kalpana
PRINCIPAL
PRINCE SHRI VENKATESHWARA
ARTS AND SCIENCE COLLEGE
GOWRIVAKKAM, CHENNAI-600 073.



PRINCE SHRI VENKATESWARA ARTS AND SCIENCE COLLEGE

Gowrivakkam, Chennai-600073.

Affiliated to University of Madras

STUDENT FEEDBACK ON SYLLABUS – ANALYSIS REPORT

Academic Year 2018-19
Department B.A. English
Number of Respondents 57

Rate the curriculum/ Syllabus on the following Points

S. No	Feedback on Syllabus	Excellent	Very good	Good	Average	Below Average
		5	4	3	2	1
1	Whether the syllabus is career oriented?	28	14	12	2	1
2	Whether the course was well structured to achieve course outcomes?	30	17	9	1	0
3	Rate the size of the syllabus in terms of student's load?	27	17	11	1	1
4	Whether the course objective is clear?	34	13	10	0	0
5	Are the books prescribed as a text book reference book in related to syllabus?	28	17	11	0	1
6	Whether the syllabus is relevant to real world problems?	25	20	12	0	0
7	Whether the syllabus is covered with industrial standards?	28	17	11	1	0
8	Is the syllabus in calculated necessary ethical values and concern for the	27	17	11	1	1



B. Kalpane
PRINCIPAL

PRINCE SHRI VENKATESHWARA
ARTS AND SCIENCE COLLEGE

GOWRIVAKKAM, CHENNAI-600 073.



PRINCE SHRI VENKATESWARA ARTS AND SCIENCE COLLEGE

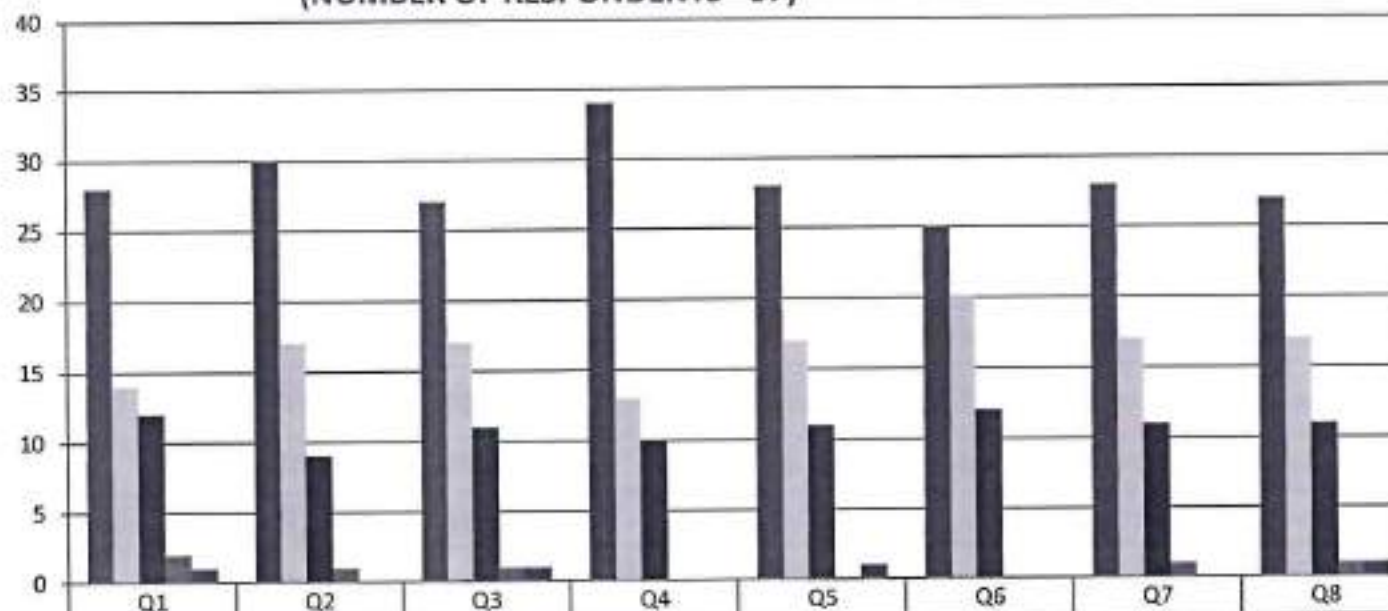
Gowrivakkam, Chennai-600073

Affiliated to University of Madras

STUDENT FEEDBACK ON SYLLABUS - 2018-2019

B.A. ENGLISH

(NUMBER OF RESPONDENTS - 57)



	Q1	Q2	Q3	Q4	Q5	Q6	Q7	Q8
■ Excellent (5)	28	30	27	34	28	25	28	27
■ Very Good (4)	14	17	17	13	17	20	17	17
■ Good (3)	12	9	11	10	11	12	11	11
■ Average (2)	2	1	1	0	0	0	1	1
■ Below Average (1)	1	0	1	0	1	0	0	1



B. Kalyana
PRINCIPAL
PRINCE SHRI VENKATESHWARA
ARTS AND SCIENCE COLLEGE
GOWRIVAKKAM, CHENNAI-600 073.



PRINCE SHRI VENKATESWARA ARTS AND SCIENCE COLLEGE

Gowrivaldam, Chennai-600073.

Affiliated to University of Madras

STUDENT FEEDBACK ON SYLLABUS – ANALYSIS REPORT

Academic Year **2018-19**
Department **M.Sc. Microbiology**
Number of Respondents **9**

Rate the curriculum/ Syllabus on the following Points

S. No	Feedback on Syllabus	Excellent	Very good	Good	Average	Below Average
		5	4	3	2	1
1	Whether the syllabus is career oriented?	5	4	0	0	0
2	Whether the course was well structured to achieve course outcomes?	5	4	0	0	0
3	Rate the size of the syllabus in terms of student's load?	5	4	0	0	0
4	Whether the course objective is clear?	4	5	0	0	0
5	Are the books prescribed as a text book reference book in related to syllabus?	3	5	1	0	0
6	Whether the syllabus is relevant to real world problems?	4	5	0	0	0
7	Whether the syllabus is covered with industrial standards?	4	5	0	0	0
8	Is the syllabus in calculated necessary ethical values and concern for the	3	5	1	0	0



B. Kalpana
PRINCIPAL
PRINCE SHRI VENKATESHWARA
ARTS AND SCIENCE COLLEGE
GOWRIVAKKAM, CHENNAI 600 073.



PRINCE SHRI VENKATESWARA ARTS AND SCIENCE COLLEGE

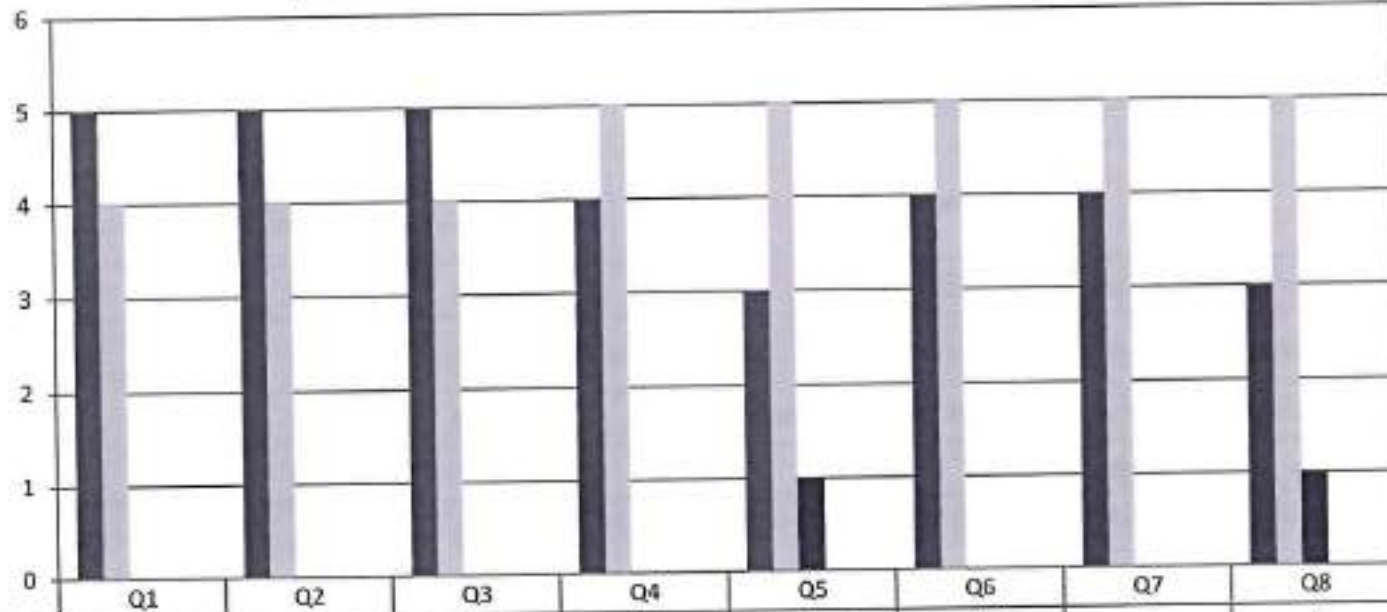
Gowrivaikkam, Chennai-600073.

Affiliated to University of Madras.

STUDENT FEEDBACK ON SYLLABUS - 2018-2019

M.Sc. MICROBIOLOGY

(NUMBER OF RESPONDENTS - 9)



	Q1	Q2	Q3	Q4	Q5	Q6	Q7	Q8
■ Excellent (5)	5	5	5	4	3	4	4	3
■ Very Good (4)	4	4	4	5	5	5	5	5
■ Good (3)	0	0	0	0	1	0	0	1
■ Average (2)	0	0	0	0	0	0	0	0
■ Below Average (1)	0	0	0	0	0	0	0	0



B. Kalpana
PRINCIPAL
PRINCE SHRI VENKATESHWARA
ARTS AND SCIENCE COLLEGE
GOWRIVAKKAM, CHENNAI-600 073.



PRINCE SHRI VENKATESWARA ARTS AND SCIENCE COLLEGE

Gowrivakkam, Chennai-600073.

Affiliated to University of Madras.

STUDENT FEEDBACK ON SYLLABUS – ANALYSIS REPORT

Academic Year 2018-19
Department M.Sc. Computer Science
Number of Respondents 8

Rate the curriculum/ Syllabus on the following Points

S. No	Feedback on Syllabus	Excellent	Very good	Good	Average	Below Average
		5	4	3	2	1
1	Whether the syllabus is career oriented?	4	4	0	0	0
2	Whether the course was well structured to achieve course outcomes?	4	4	0	0	0
3	Rate the size of the syllabus in terms of student's load?	5	3	0	0	0
4	Whether the course objective is clear?	3	4	0	1	0
5	Are the books prescribed as a text book reference book in related to syllabus?	4	4	0	0	0
6	Whether the syllabus is relevant to real world problems?	5	3	0	0	0
7	Whether the syllabus is covered with industrial standards?	4	4	0	0	0
8	Is the syllabus in calculated necessary ethical values and concern for the	4	4	0	0	0



B. Kalpana
PRINCIPAL
PRINCE SHRI VENKATESHWARA
ARTS AND SCIENCE COLLEGE
GOWRIVAKKAM, CHENNAI-600 073.



PRINCE SHRI VENKATESWARA ARTS AND SCIENCE COLLEGE

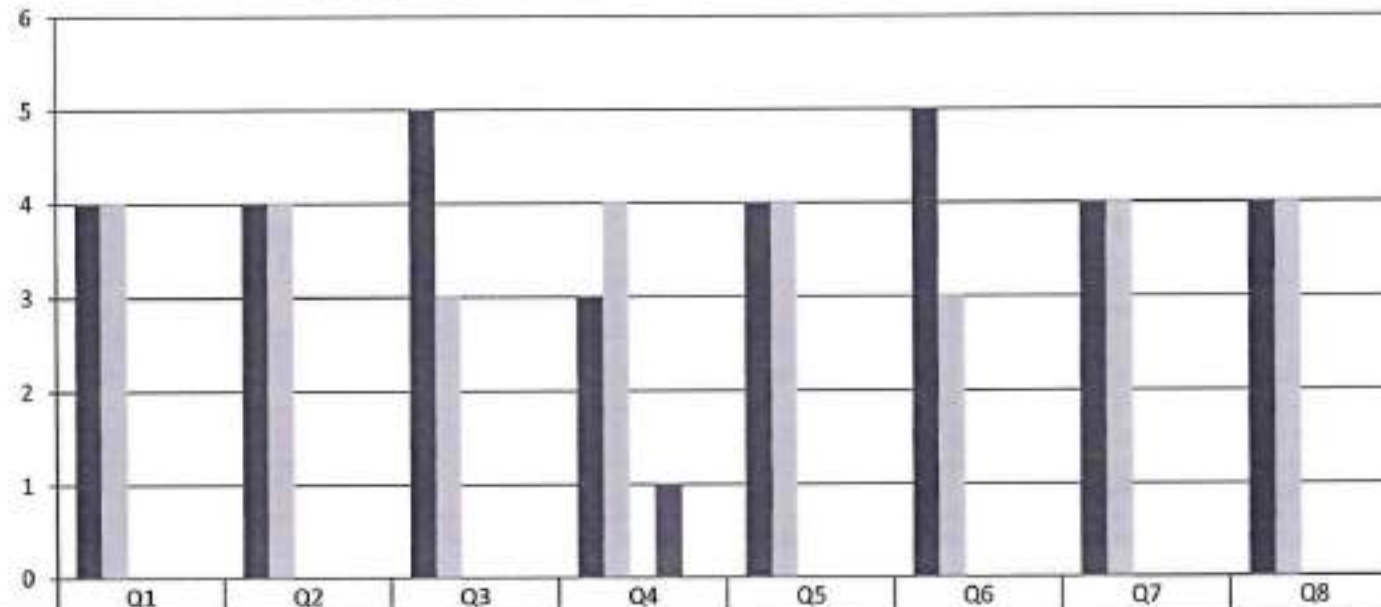
Gowrivakkam, Chennai-600073.

Affiliated to University of Madras

STUDENT FEEDBACK ON SYLLABUS - 2018-2019

M.Sc. COMPUTER SCIENCE

(NUMBER OF RESPONDENTS - 8)



	Q1	Q2	Q3	Q4	Q5	Q6	Q7	Q8
■ Excellent (5)	4	4	5	3	4	5	4	4
■ Very Good (4)	4	4	3	4	4	3	4	4
■ Good (3)	0	0	0	0	0	0	0	0
■ Average (2)	0	0	0	1	0	0	0	0
■ Below Average (1)	0	0	0	0	0	0	0	0



B. Kalpana
PRINCIPAL
PRINCE SHRI VENKATESHWARA
ARTS AND SCIENCE COLLEGE
GOWRIVAKKAM, CHENNAI-600 073



PRINCE SHRI VENKATESWARA ARTS AND SCIENCE COLLEGE

Gowrivakkam, Chennai-600073.

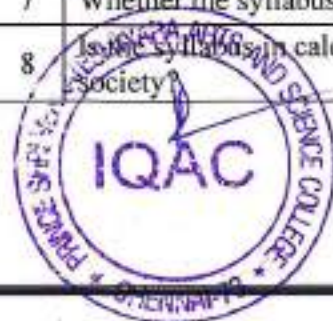
Affiliated to University of Madras

STUDENT FEEDBACK ON SYLLABUS – ANALYSIS REPORT

Academic Year 2018-19
 Department M.Sc. Biochemistry
 Number of Respondents 5

Rate the curriculum/ Syllabus on the following Points

S. No	Feedback on Syllabus	Excellent	Very good	Good	Average	Below Average
		5	4	3	2	1
1	Whether the syllabus is career oriented?	2	3	0	0	0
2	Whether the course was well structured to achieve course outcomes?	2	3	0	0	0
3	Rate the size of the syllabus in terms of student's load?	2	3	0	0	0
4	Whether the course objective is clear?	3	2	0	0	0
5	Are the books prescribed as a text book reference book in related to syllabus?	2	3	0	0	0
6	Whether the syllabus is relevant to real world problems?	2	3	0	0	0
7	Whether the syllabus is covered with industrial standards?	2	2	1	0	0
8	Is the syllabus calculated necessary ethical values and concern for the Society?	3	2	0	0	0



B. Kalpana
PRINCIPAL

PRINCE SHRI VENKATESHWARA
 ARTS AND SCIENCE COLLEGE
 GOWRIVAKKAM, CHENNAI-600 073.



PRINCE SHRI VENKATESWARA ARTS AND SCIENCE COLLEGE

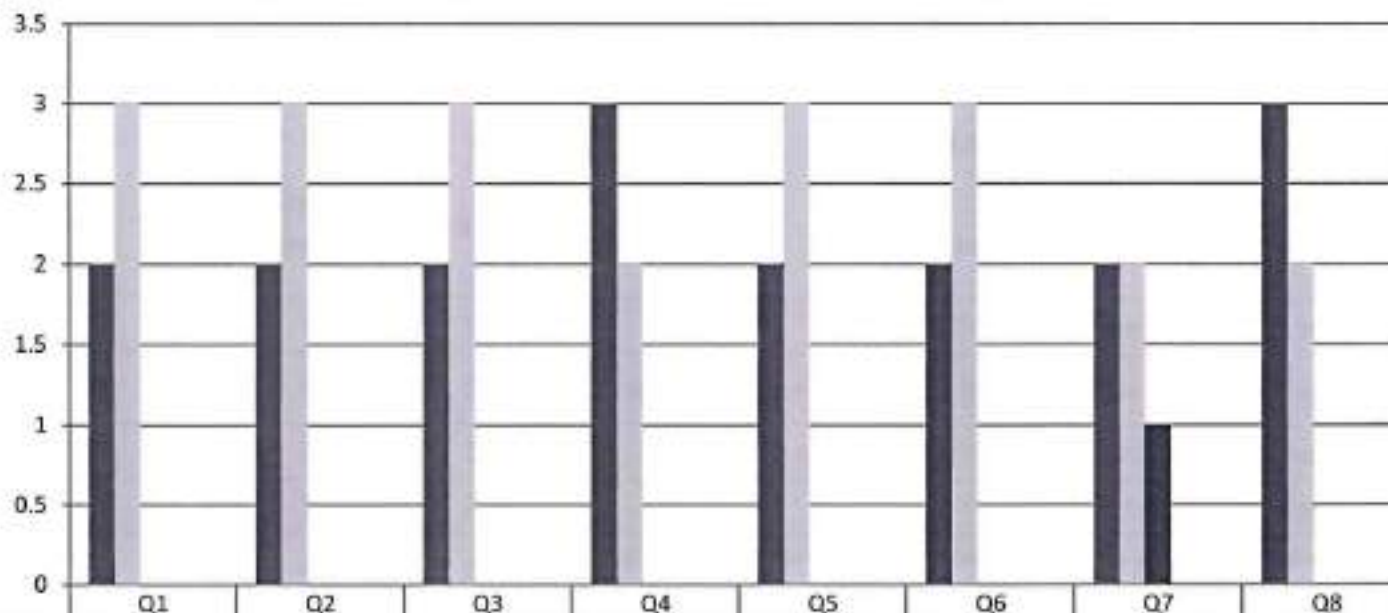
Gowrivakkam, Chennai-600073

Affiliated to University of Madras

STUDENT FEEDBACK ON SYLLABUS - 2018-2019

M.Sc. BIOCHEMISTRY

(NUMBER OF RESPONDENTS - 5)



	Q1	Q2	Q3	Q4	Q5	Q6	Q7	Q8
■ Excellent (5)	2	2	2	3	2	2	2	3
■ Very Good (4)	3	3	3	2	3	3	2	2
■ Good (3)	0	0	0	0	0	0	1	0
■ Average (2)	0	0	0	0	0	0	0	0
■ Below Average (1)	0	0	0	0	0	0	0	0



B. Kalpana
PRINCIPAL
PRINCE SHRI VENKATESHWARA
ARTS AND SCIENCE COLLEGE
GOWRIVAKKAM, CHENNAI-600 073.



PRINCE SHRI VENKATESWARA ARTS AND SCIENCE COLLEGE

Gowrivakkam, Chennai-600073.

Affiliated to University of Madras.

STUDENT FEEDBACK ON SYLLABUS – ANALYSIS REPORT

Academic Year 2018-19
Department M.Sc. Biotechnology
Number of Respondents 7

Rate the curriculum/ Syllabus on the following Points

S. No	Feedback on Syllabus	Excellent	Very good	Good	Average	Below Average
		5	4	3	2	1
1	Whether the syllabus is career oriented?	4	3	0	0	0
2	Whether the course was well structured to achieve course outcomes?	4	3	0	0	0
3	Rate the size of the syllabus in terms of student's load?	3	4	0	0	0
4	Whether the course objective is clear?	3	3	1	0	0
5	Are the books prescribed as a text book reference book in related to syllabus?	4	3	0	0	0
6	Whether the syllabus is relevant to real world problems?	4	3	0	0	0
7	Whether the syllabus is covered with industrial standards?	3	4	0	0	0
8	Is the syllabus in calculated necessary ethical values and concern for the	4	3	0	0	0



B. Kalpana
PRINCIPAL
PRINCE SHRI VENKATESHWARA
ARTS AND SCIENCE COLLEGE
GOWRIVAKKAM, CHENNAI-600 073



PRINCE SHRI VENKATESWARA ARTS AND SCIENCE COLLEGE

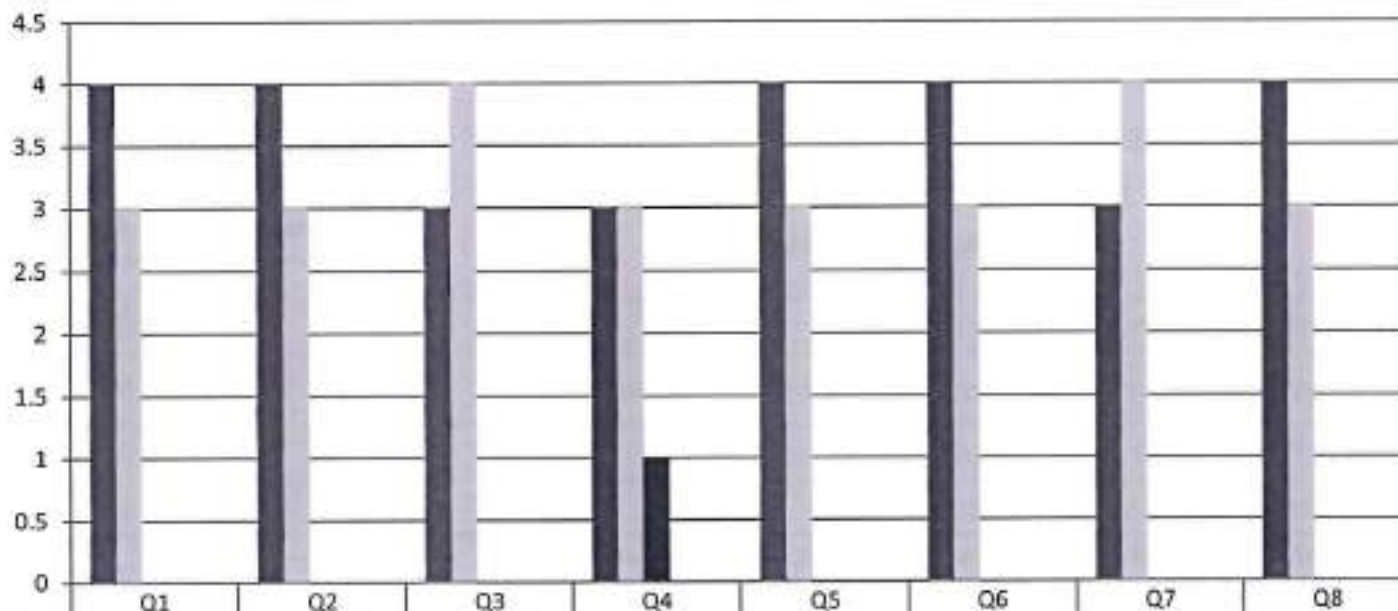
Gowrivakkam, Chennai-600073.

Affiliated to University of Madras

STUDENT FEEDBACK ON SYLLABUS - 2018-2019

M.Sc. BIOTECHNOLOGY

(NUMBER OF RESPONDENTS - 7)



	Q1	Q2	Q3	Q4	Q5	Q6	Q7	Q8
■ Excellent (5)	4	4	3	3	4	4	3	4
■ Very Good (4)	3	3	4	3	3	3	4	3
■ Good (3)	0	0	0	1	0	0	0	0
■ Average (2)	0	0	0	0	0	0	0	0
■ Below Average (1)	0	0	0	0	0	0	0	0



B. Kalpana
PRINCIPAL
 PRINCE SHRI VENKATESHWARA
 ARTS AND SCIENCE COLLEGE
 GOWRIVAKKAM, CHENNAI-600 073